

For HEALTHIER SKIN

Description	Pack size	Item number
Skin Barrier Wipe	30 pcs	120215
Skin Barrier Spray 50 ml	1 pc	120205
Adhesive Remover Wipe	30 pcs	120115
Adhesive Remover Spray 50 ml	1 pc	120105
Barrier Cream 60 ml	1 pc	120005
Protective Sheet 10 X 10 cm	10 pcs	032105
Protective Sheet 15 X 15 cm	5 pcs	032155
Protective Sheet 20 X 20 cm	5 pcs	032205
Powder 25 g	1 pc	019075

For EXTRA SECURITY

Mouldable Ring, thin (2.0 mm)	30 pcs	120305
Mouldable Ring, thick (4.2 mm)	30 pcs	120425
Tube Paste 60 g	1 pc	120500
Strip Paste	10 pcs	026555
Elastic Tape Semi-circle	20 pcs	120700
Elastic Tape Belt	20 pcs	120720
Elastic Tape Straight	20 pcs	120740
Belt (Standard)	1 pc	004215
Belt (Extra Large)	1 pc	004220

For MORE DISCRETION

Lubricating Deo Foilpack 7,5 ml	20 pcs	120600
Lubricating Deo Bottle 240 ml	1 pc	120610

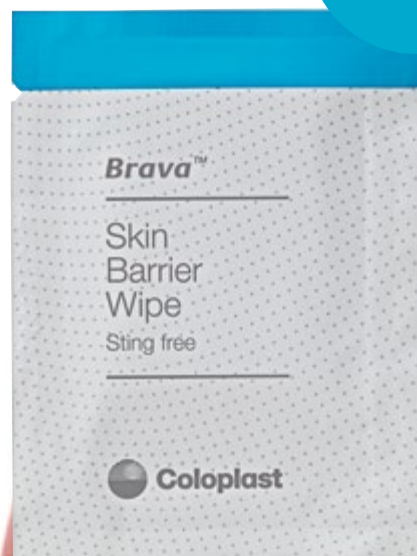
Brava™ / Range of Accessories



The new Brava™ accessories range features products that are designed to reduce leakage and take care of the skin.

Think again
Think Brava®

Brava™ Skin Barrier Wipe and Spray



Sting-free

Brava™ Skin Barrier is sting-free and protects the skin

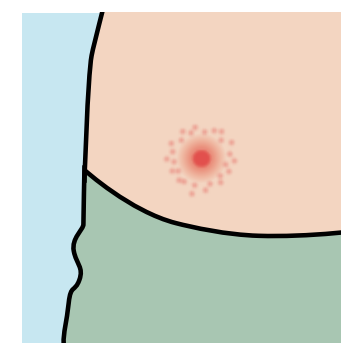
Brava™ Skin Barrier Wipe and Spray

Protective Barrier

The Brava™ Skin Barrier is sting-free and protects the skin against problems associated with output and adhesives. It leaves a thin, breathable film on the skin, protecting it from damage. It dries within seconds and does not build up residue on the skin, leaving you ready to apply a new barrier. **It comes in two forms: a spray and a wipe.** The wipe's discreet packaging makes it practical for travelling or use on-the-go.

Please read full instructions before use

Clean the skin



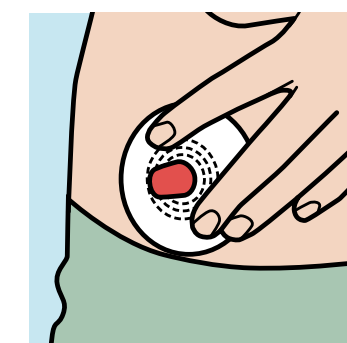
Make sure that the skin around the stoma is clean and accessible before using Brava™ Skin Barrier Wipe.

Apply directly to your skin



Take the Brava™ Skin Barrier Wipe and gently apply a protective layer on the skin around the stoma to provide protection against body waste.

Ready for new base plate



After a short while, you can apply your new base plate, and the skin is now protected against body waste.

Brava™ Adhesive Remover Spray & Wipe



Sting-free

Brava™ Adhesive Remover is sting-free and gentle

Brava™ Adhesive Remover Wipe and Spray

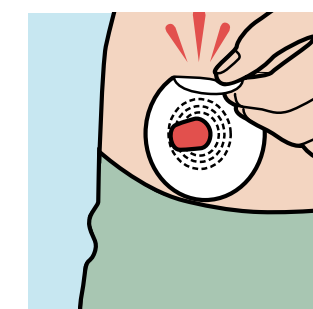
Easy adhesive removal

The sting-free Brava™ Adhesive Remover enables you to remove your barrier and leftover residue easily. It does not contain alcohol, so it does not sting or hurt the skin. It dries within seconds and does not affect further adhesion, leaving you ready to apply a new barrier.

The Brava™ Adhesive Remover comes in two forms: a spray and a convenient wipe. The gentle spray makes it easy to remove the barrier, while the wipe gently removes adhesive residues left on the skin. The wipe's discreet packaging makes it practical for travelling or use on-the-go.

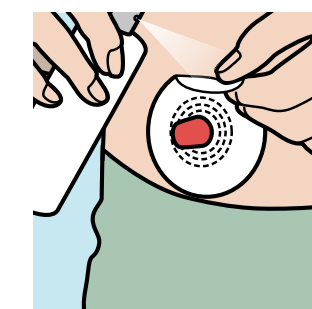
Please read full instructions before use.

Discomfort and soreness



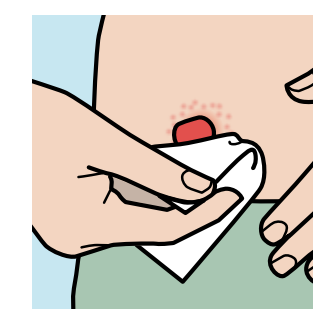
If you have discomfort or soreness when removing your base plate, then use Brava™ Adhesive Remover.

Remove your baseplate (spray)



Spray from above the base plate and let the adhesive remover run down behind the plate. After a few seconds, the baseplate can be easily removed and you are ready to apply a new baseplate.

Remove left over residues (wipe)



If you have left over residue on the skin, then use the Brava™ Adhesive Remover Wipe. It is sting free and will dry within a few seconds, leaving you ready to apply a new base plate.

Brava™ Barrier Cream



Brava™ Barrier Cream protects dry and irritated skin

Brava™ Barrier Cream

Moisturizing skin protection

The Brava™ Barrier Cream has a moisturizing effect that helps manage sore, dry and irritated skin. It creates a long-lasting barrier which protects the skin from further damage from output or adhesives. This allows the baseplate to adhere so you can wear your appliance.

Please read full instructions before use.



Application

Rub a thin layer of Barrier Cream over the affected area before applying your stoma bag as normal. Only a small amount of cream is required at a time as the baseplate is still able to adhere to the skin comfortably.

Brava™ Protective Sheet



Brava™ Protective Sheet provides peristomal protection

Brava™ Protective Sheet

Protecting the peristomal skin

The Brava™ Protective Sheet is a skin-friendly product to be used under the baseplate. It absorbs moisture and thereby minimises the risk of maceration of the skin. It provides protection of the peristomal skin, and a ready surface for applying a new appliance. It can be cut, moulded and formed in order to fit comfortably around the stoma.

Please read full instructions before use.



Preparation

Cut a hole to fit the size of the stoma and remove the protecting paper.

Application

Apply on clean and dry skin and press firmly.

Removal

The protective sheet should be removed slowly and carefully.

Brava™ Powder



Brava™ Powder reduces irritation associated with moist skin

Brava™ Powder

Reducing Skin Irritation

The Brava™ Powder reduces skin irritation related to moist skin. It is used to absorb moisture from the peristomal skin in order to allow the ostomy bag to adhere properly, especially if the skin is very moist. It can be used just around the stoma or under the adhesive.

Please read full instructions before use.



Preparation

Wash and dry the peristomal skin.

Application

Screw the cap off and aim at the intended area. Gently shake or squeeze the bottle and spread the powder over the intended skin. Spread the powder evenly using gauze. Dust off excess powder before applying the ostomy barrier or ostomy pouch adhesive. Close the cap tightly after use and store in a cool dry place.

Brava™

Mouldable Ring



Brava™ Mouldable Ring is durable for reduced leakage

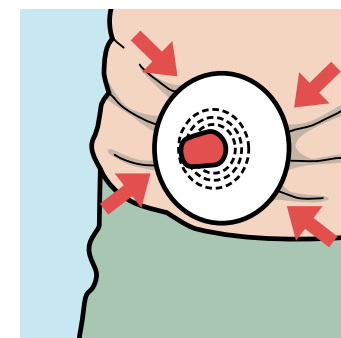
Brava™ Mouldable Ring

Protects and shapes

The new Brava™ Mouldable Ring features a strengthened formulation that delivers longer-lasting protection against leakage. It is designed to be highly durable, enabling it to maintain a tighter fit. It is easy to use and can be moulded to fit your body shape. This ensures a durable, tight fit between your stoma and barrier. Brava™ Mouldable Ring helps to keep skin healthy by protecting it against output and absorbing skin moisture. The ring is not easily broken down. It directs output away from the skin and out into the pouch – which is where it belongs!

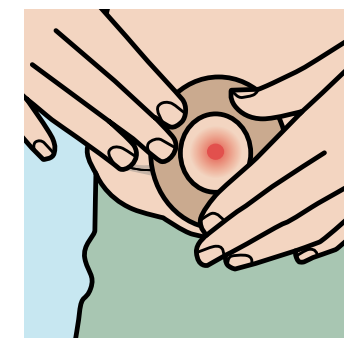
Please read full instructions before use

Difficult to get tight seal



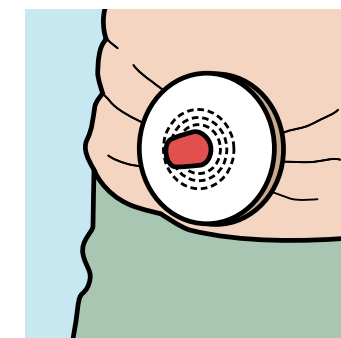
Creases and folds in the skin around the stoma can make it difficult to obtain a tight seal between the stoma and the appliance.

Mould the ring to your body



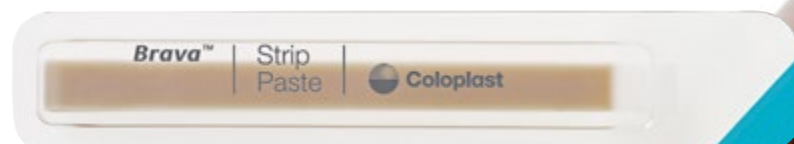
Mould the Brava™ Mouldable Ring to fit your body contours around the stoma.

You now have a durable seal



You can now apply a base plate on top of the ring, and with the Brava™ Mouldable Ring you now have a seal which is durable, to reduce leakage.

Brava™ Tube & Strip Paste



Brava™ Paste for alcohol-free skin protection against leakage

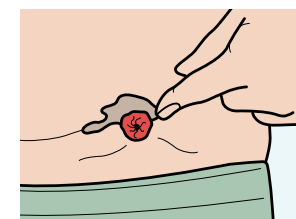
Brava™ Tube and Strip Paste

Leakage Prevention

Cavities and folds in the skin around the stoma can make it difficult to obtain a tight seal between the stoma and the appliance. If your paste erodes too quickly there is a risk of leakage.

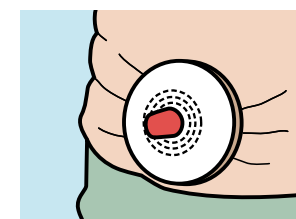
The new Brava™ Paste features a durable, alcohol-free formulation that is skin-friendly and reduces leakage. Since the Brava™ Paste doesn't contain alcohol, it doesn't sting when applied. The greater durability of the new paste makes it resistant to breaking down or dissolving, creating a tight seal between your skin and the baseplate. It enables you to create a tight fit between your stoma and your appliance. It is also available as a Strip Paste which fills deeper folds and scars.

Please read full instructions before use.



Mould the paste to create an even surface

Apply the Brava™ Paste and mould it to fit your body contours around the stoma and create an even surface. You may also apply it directly onto the base plate.



You now have a tight seal

You can now apply a baseplate on top of the paste. With the Brava™ Paste you now have a durable seal reducing leakage.

Brava™

Elastic Tape

Semi-circle / Straight / Belt



Brava™ Elastic Tape that follows your natural body movements

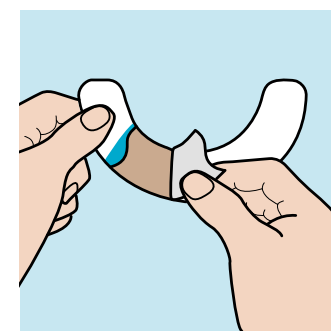
Brava™ Elastic Tape

Security and Flexibility

The skin friendly Brava™ Elastic Tape is designed to prevent the edges of the baseplate from lifting and keeps your baseplate securely in place. It is elastic so it follows your body shape and allows you freedom of movement. This can mean greater security and improved wear time of your appliance. It is placed on top of the edges of the baseplate and you can use one or two pieces depending on your need. Brava™ Elastic Tape secures the position of the baseplate and follows your body movements.

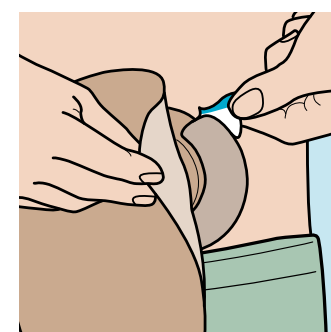
Brava™ Elastic Tape is also available as a straight design to fit square baseplates comfortably whilst the Brava™ Elastic Tape Belt provides extra support for outward areas, such as a hernia.

Please read full instructions before use.



Get the tape ready to apply

Hold the Brava™ Elastic Tape with both hands and pull the largest protective paper off. Keep the other protective paper on until the tape is applied.



Apply directly to the skin

Apply the Brava™ Elastic Tape to the base plate and the skin where desired. Remove the remaining protective paper and smooth the tape onto the skin.

Brava™ Belt



Brava™ Belt is discrete for extra security

Brava™ Belt

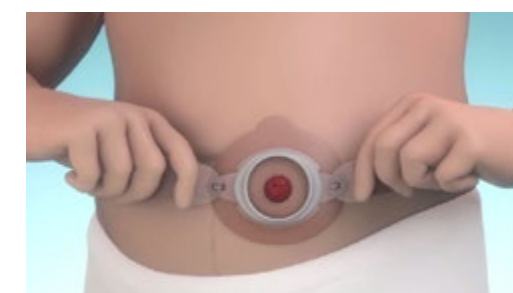
A belt is used to secure the position of the baseplate for extra security.

The Brava™ Belt is made of soft and comfortable material, and is discrete to wear. The belt comes in both a standard and XL size, which are adjustable so you can fit it for your body. A belt can be very useful if your abdomen is uneven or rounded.

The Brava™ Belt fits with all SenSura® and Alterna® baseplates with belt ears.

Please read full instructions before use

Attaching the Brava™ Belt



Attach the belt to the ears on your ostomy barrier. Make sure that the belt is not twisted.

Brava™ Lubricating Deodorant



Brava™ lubricating deodorant to reduce leakage

Brava™ Lubricating Deodorant

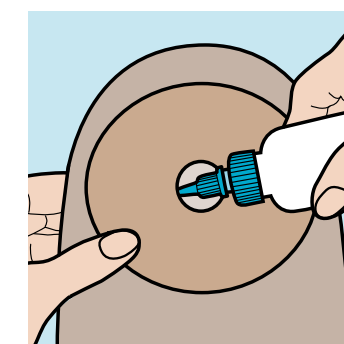
Multi-lubricating skin care and reduced leakage

Emptying an open bag can be unpleasant due to smell and difficulties in getting the content away from the stoma and out of the bag. The new Brava™ Lubricating Deodorant neutralises odour and has a multi-lubricating effect. This means that your bag is continuously lubricated and ensures that content is always at the bottom of the bag and not around your stoma. A lubricating deodorant makes it easier to empty your bag.

The Brava™ Lubricating Deodorant is part of the new Brava™ range of accessories from Coloplast, designed to reduce leakage and take care of your skin.

Please read full instructions before use

Add Brava™ Lubricating Deodorant



Squeeze 5-10 ml/ 1 sachet of Brava™ Lubricating Deodorant into the pouch. Gently rub the sides of the pouch together to evenly disperse the deodorant throughout the pouch.

If you use a drainable bag, you can add the deodorant through either the opening for the stoma or the drainage outlet. Repeat after draining the bag.

This image shows a full page of white paper with horizontal grey ruling lines. The word "Notes" is written in a large, dark grey font at the top left. Below it are two horizontal lines, followed by a gap, and then another set of two horizontal lines. The rest of the page is filled with continuous horizontal ruling lines.