



SpeediCath®

There is no one-size-fits-all when it comes to catheter choice

For more than 20 years, SpeediCath has made a difference to users with its unique coating and ease of use.



SpeediCath®

Our range,



For men

- a. **SpeediCath Navi**
The first catheter with an insertion grip and a flexible tip
- b. **SpeediCath Standard**
The proven standard catheter
- c. **SpeediCath Compact Male**
The first compact male catheter
- d. **SpeediCath Compact Set**
The first compact all-in-one catheter and bag solution

your choice



For women

- e) **SpeediCath Compact Plus**
SpeediCath Compact
The most compact female catheter in our range
- f) **SpeediCath Compact Set**
The first compact all-in-one catheter and bag solution
- g) **SpeediCath Standard**
The proven standard catheter

SpeediCath[®] is the safe choice every time – thanks to 3 unique features

SpeediCath benefits from a number of features that ensure safe catheterization.

Uniform hydrophilic coating

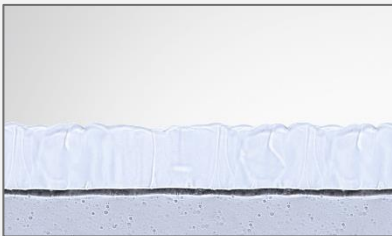
The coating is exceptionally smooth to minimise surface friction, ensuring the highest level of comfort for you during insertion and withdrawal, while also reducing the risk of urinary tract complications.

Polished eyelets

The edge of every eyelet is polished to create a soft and perfect transition between them and the catheter surface, ensuring maximum comfort when inserting and withdrawing the catheter.

Phthalate-free

No risk of hormonal complications.



SpeediCath hydrophilic coating



SpeediCath polished eyelets



Traditional hydrophilic coating



Unpolished eyelets

SpeediCath[®] Standard

- Instantly ready to use due to the unique hydrophilic coating
- Simple and intuitive to use
- Designed to reduce friction and increase comfort due to the hydrophilic coating and polished eyelets
- Single-handed opening with pull ring for people with low hand dexterity
- Adhesive dot ensures catheter stays in place during preparation
- Comes in ranges for males, females and children



SpeediCath[®] Navi

Getting a firm hold of your catheter is important. That is why our SpeediCath[®] Navi comes with an insertion grip.



Flexible tip and soft catheter

The flexibility and softness of the tip and catheter support gentle insertion and enable easy navigation through the curves and bends of the male urethra.



Insertion grip

The insertion grip is designed to promote clean catheterisation, supporting easy handling and stepwise insertion without touching the tip or catheter.



Instantly ready to use catheter

SpeediCath[®] Navi is a single-use, hydrophilic coated catheter. It is packaged in a sterile saline solution, making it instantly ready to use.

SpeediCath® Compact Male



Product description

SpeediCath® Compact Male is compact and discreet without compromising performance, safety or hygiene. Thanks to its patented telescoping feature, it is easy to guide and control during insertion.

Key benefits

- Compact and discreet so you can easily carry it in your pocket or bag. No one needs to know it's a catheter
- Pre-lubricated and instantly ready-to-use, without adding water or lubricant
- Simple to open and convenient to dispose
- Telescopic design makes it easy to guide and control the catheter during insertion
- Thanks to its stiffness, there's no need to touch the catheter itself

SpeediCath[®] Compact Female

53% of women consider finding the urethra as the biggest challenge when learning to catheterise.



Solid grip

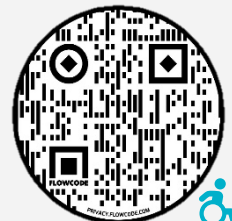
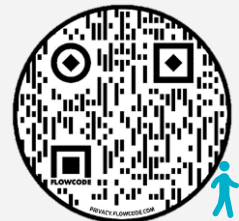
Its short length and solid grip handle provide control so there's no need to touch the catheter itself.



Compact, discreet design

It is the first catheter designed to suit the anatomy of the female body, and it is about the size of a lipstick.

Scan the QR codes to see the how-to videos



SpeediCath® Compact Set Male & Female



Ideal for travelling

SpeediCath® Compact Set comes in a discreet design for males and females making it ideal for travelling.



All-in-one

SpeediCath® Compact Set is a simple and convenient all-in-one catheter and bag solution.



Functional design

With its easy grip handle there's no need to touch the catheter and it's simple to open and re-seal for hygienic disposal.

Product overview

SpeediCath® range for men

| Product name | Catheter length | Size (CH) | Items per box | Product code |
|-------------------------------------|---------------------|-----------|---------------|--------------|
| SpeediCath® Navi | | | | |
| SpeediCath® Navi | 40 cm | 10 | 30 | 290100 |
| SpeediCath® Navi | 40 cm | 12 | 30 | 290120 |
| SpeediCath® Navi | 40 cm | 14 | 30 | 290140 |
| SpeediCath® Navi | 40 cm | 16 | 30 | 290160 |
| SpeediCath® Standard Male | | | | |
| SpeediCath® Standard Male | 40 cm | 8 | 30 | 284080 |
| SpeediCath® Standard Male | 40 cm | 10 | 30 | 284100 |
| SpeediCath® Standard Male | 40 cm | 12 | 30 | 284120 |
| SpeediCath® Standard Male | 40 cm | 14 | 30 | 284140 |
| SpeediCath® Standard Male | 40 cm | 16 | 30 | 284160 |
| SpeediCath® Standard Male | 40 cm | 18 | 30 | 284180 |
| SpeediCath® Male Tiemann Tip | | | | |
| SpeediCath® Male Tiemann Tip | 40 cm | 10 | 30 | 284900 |
| SpeediCath® Male Tiemann Tip | 40 cm | 12 | 30 | 284920 |
| SpeediCath® Male Tiemann Tip | 40 cm | 14 | 30 | 284940 |
| SpeediCath® Compact Male | | | | |
| SpeediCath® Compact Male | 30 cm | 12-18 | 30 | 286920 |
| SpeediCath® Compact Set Male | | | | |
| SpeediCath® Compact Set Male | 30 cm ³⁰ | 12-18 | 20 | 284221 |

Product overview

SpeediCath® range for women

| Product name | Catheter length | Size (CH) | Items per box | Product code |
|--|-----------------|-----------|---------------|--------------|
| SpeediCath® Standard Female | | | | |
| SpeediCath® Standard Female | 20 cm | 6 | 30 | 285060 |
| SpeediCath® Standard Female | 20 cm | 8 | 30 | 285080 |
| SpeediCath® Standard Female | 20 cm | 10 | 30 | 285100 |
| SpeediCath® Standard Female | 20 cm | 12 | 30 | 285120 |
| SpeediCath® Standard Female | 20 cm | 14 | 30 | 285140 |
| SpeediCath® Standard Female | 20 cm | 16 | 30 | 285160 |
| SpeediCath® Compact Female | | | | |
| SpeediCath® Compact Female | 7 cm | 8 | 30 | 285780 |
| SpeediCath® Compact Female | 7 cm | 10 | 30 | 285800 |
| SpeediCath® Compact Female | 7 cm | 12 | 30 | 285820 |
| SpeediCath® Compact Female | 7 cm | 14 | 30 | 285840 |
| SpeediCath® Compact Female Plus | | | | |
| SpeediCath® Compact Female Plus | 9 cm | 10 | 30 | 288100 |
| SpeediCath® Compact Female Plus | 9 cm | 12 | 30 | 288120 |
| SpeediCath® Compact Female Plus | 9 cm | 14 | 30 | 288140 |
| SpeediCath® Compact Set Female | | | | |
| SpeediCath® Compact Set Female | 9 cm | 10 | 20 | 285201 |
| SpeediCath® Compact Set Female | 9 cm | 12 | 20 | 285221 |
| SpeediCath® Compact Set Female | 9 cm | 14 | 20 | 285241 |

Product overview SpeediCath® range for children

| Product name | Catheter length | Size (CH) | Items per box | Product code |
|---------------------------------|-----------------|-----------|---------------|--------------|
| SpeediCath® Standard Boy | | | | |
| SpeediCath® Standard Boy | 30 cm | 6 | 30 | 286060 |
| SpeediCath® Standard Boy | 30 cm | 8 | 30 | 286080 |
| SpeediCath® Standard Boy | 30 cm | 10 | 30 | 286100 |
| SpeediCath® Standard Boy | 30 cm | 12 | 30 | 286120 |

In addition to the SpeediCath® Standard Boy range for children, the female SpeediCath® ranges can also be prescribed for girls. If you have any questions please consult with your healthcare professional.